

Marcelo Morales Torcato

Lendo e Estudando

1ª. Edição

Paulicéia
Marcelo Morales Torcato
2008

www.marcelotorca.com
www.marcelotorca.com/audios.php
www.marcelotorca.palcomp3.com.br
<http://radiocelo.blogspot.com>

Índice.

Claves	página 04
Pauta	página 04
Notas na Clave de Sol	página 05
Notas na Clave de Fá	página 06
Escalas	página 07
Exercícios	página 08
Tabela de Acordes	10
Notas nos Instrumentos	11

Claves.

Neste estudo veremos duas claves: Clave de Sol e Clave de Fá. Elas servem para dar nome e altura as notas. A altura é o som, mais grave ou mais agudo, assim, geralmente a Clave de Sol é utilizado para sons médios e agudos, e a Clave de Fá para os sons médios e graves.

CLAVE DE SOL.

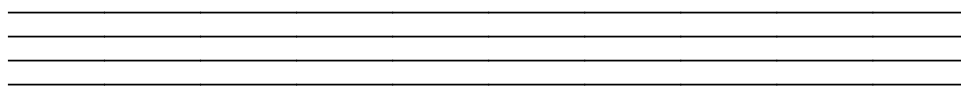


CLAVE DE FÁ.



Pauta.

Um conjunto de cinco linhas com a mesma distância entre si, serve para escrever as notas e claves.



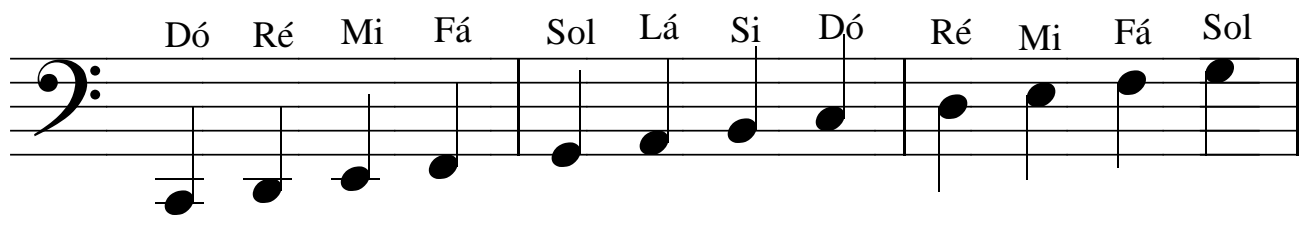
Mi Fá Sol Lá Si Dó Ré Mi Fá Sol Lá Si

A musical staff in treble clef showing a sequence of notes. The notes are: Mi (G4), Fá (A4), Sol (B4), Lá (C5), Si (D5), Dó (E5), Ré (F5), Mi (G5), Fá (A5), Sol (B5), Lá (C6), and Si (D6). Each note is represented by a black dot with a vertical stem.

Dó Ré Mi Fá Sol Lá Si Dó Ré Mi Fá Sol

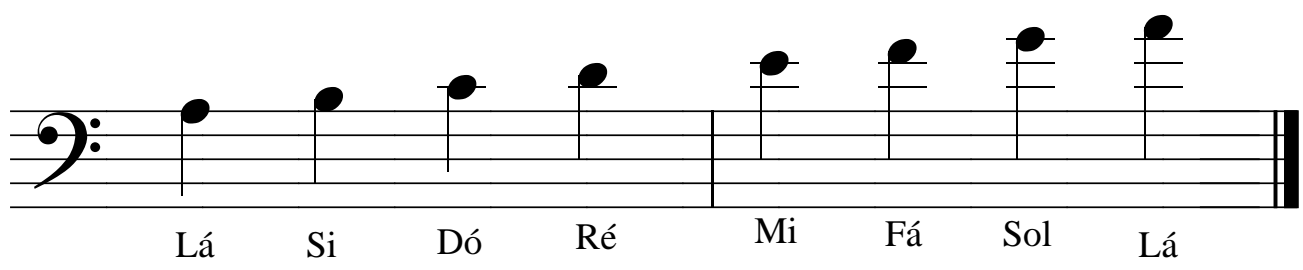
A musical staff in treble clef showing a sequence of notes. The notes are: Dó (C4), Ré (D4), Mi (E4), Fá (F4), Sol (G4), Lá (A4), Si (B4), Dó (C5), Ré (D5), Mi (E5), Fá (F5), and Sol (G5). Each note is represented by a black dot with a vertical stem. The staff ends with a double bar line.

Dó Ré Mi Fá Sol Lá Si Dó Ré Mi Fá Sol



A musical staff in bass clef with a key signature of one flat (B-flat). The notes are: D3, E3, F3, G3, A3, B3, C4, D4, E4, F4, G4, A4. The notes are grouped into two measures of four notes each. The first measure contains D3, E3, F3, G3. The second measure contains A3, B3, C4, D4. The third measure contains E4, F4, G4, A4. The fourth measure contains B4, C5, D5, E5. The notes are connected by a single line, indicating a continuous melodic line.

Lá Si Dó Ré Mi Fá Sol Lá

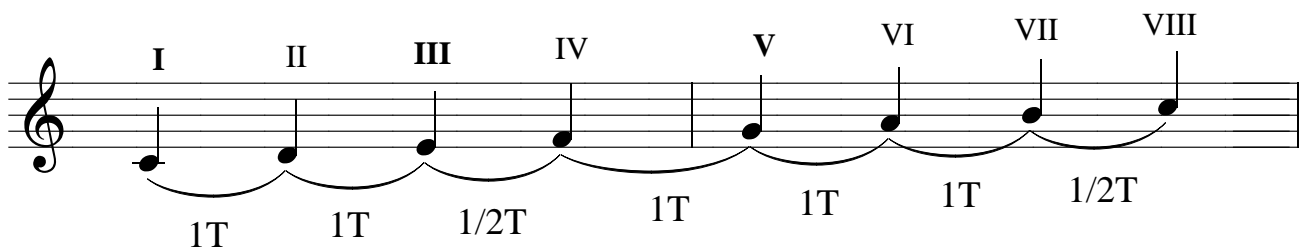


A musical staff in bass clef with a key signature of one flat (B-flat). The notes are: A3, B3, C4, D4, E4, F4, G4, A4. The notes are grouped into two measures of four notes each. The first measure contains A3, B3, C4, D4. The second measure contains E4, F4, G4, A4. The notes are connected by a single line, indicating a continuous melodic line.

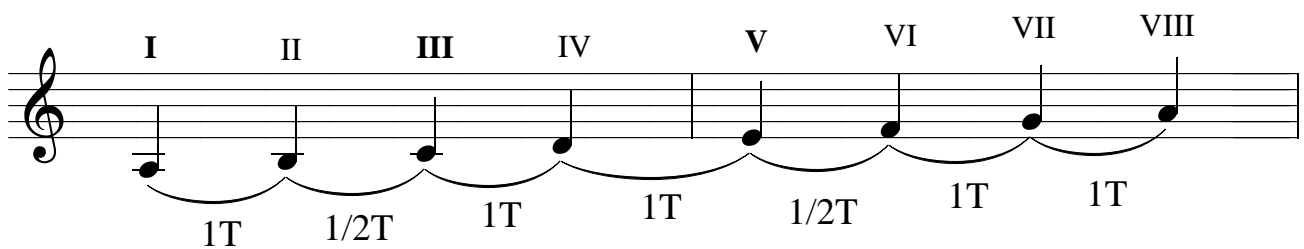
Escalas

Escala é uma sucessão de notas que não se repetem. Vamos estudar a Escala Maior e a Escala menor. Para Contarmos os intervalos, utilizamos o tom e semitom, onde o semitom é a menor distância entre duas notas e tom é a soma de dois semitons.

Dó Maior



Lá menor



Acorde de Dó Maior ou C

Acorde de Lá menor ou Am



Exercícios

Faça as escalas e monte os acordes.

Escala de Dó Maior

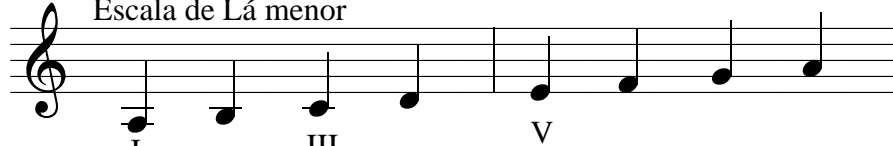


I III V

Acorde de Dó Maior C

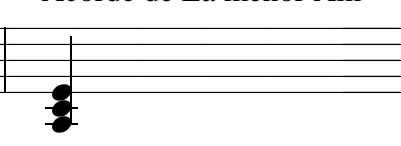


Escala de Lá menor

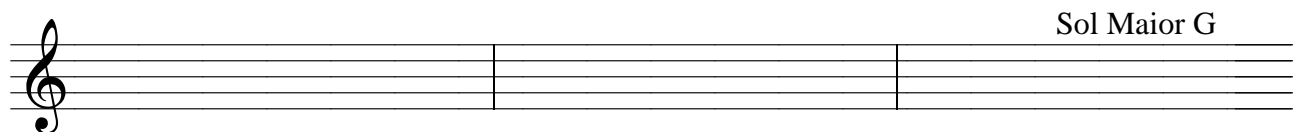


I III V

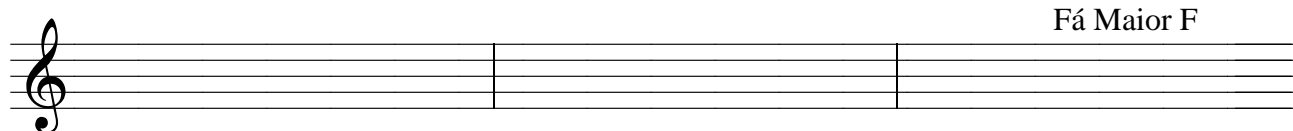
Acorde de Lá menor Am



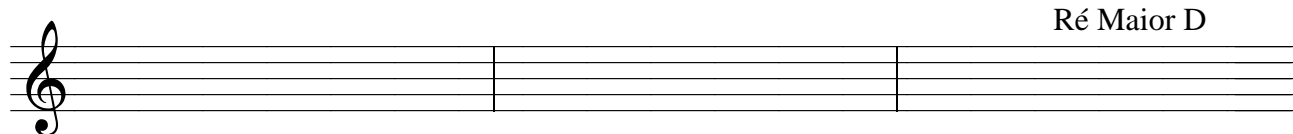
Sol Maior G



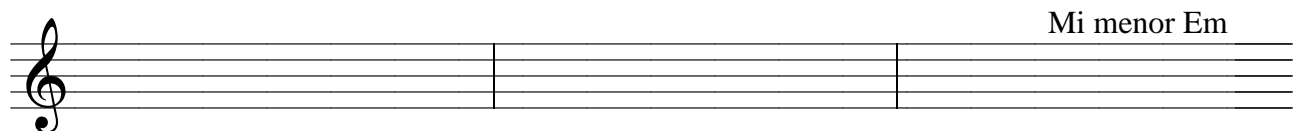
Fá Maior F



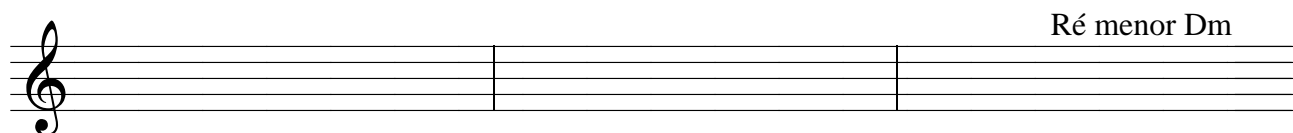
Ré Maior D



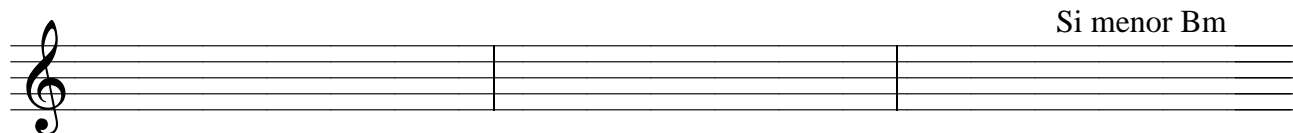
Mi menor Em



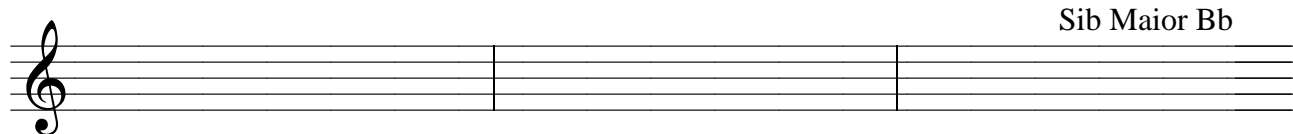
Ré menor Dm



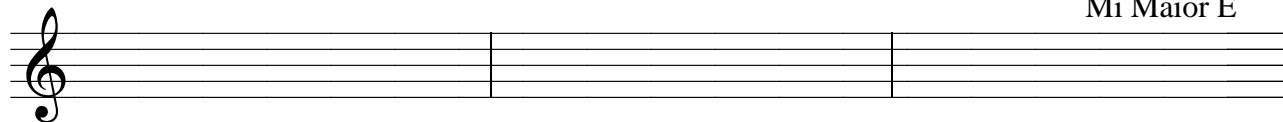
Si menor Bm



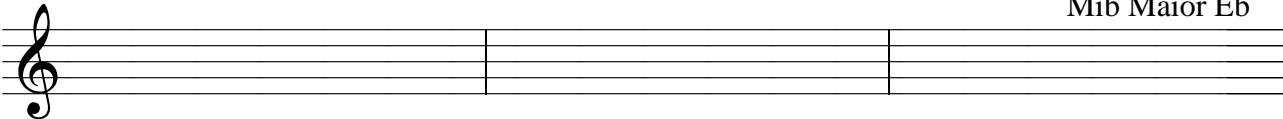
Sib Maior Bb



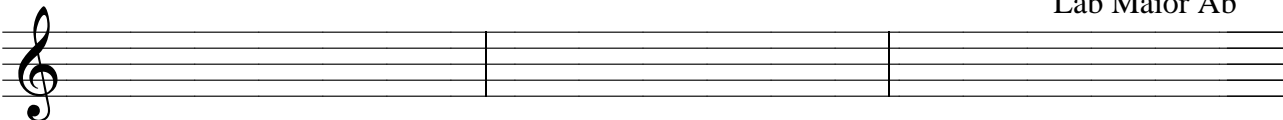
Mi Maior E



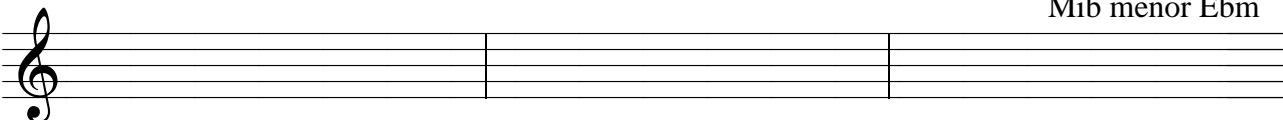
Mib Maior Eb



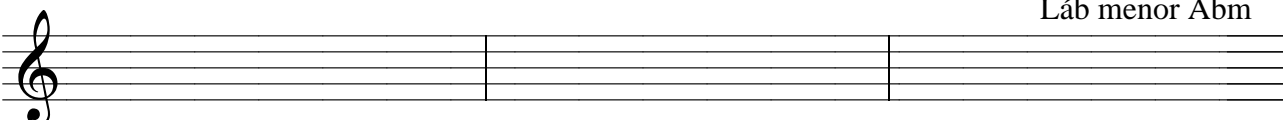
Láb Maior Ab



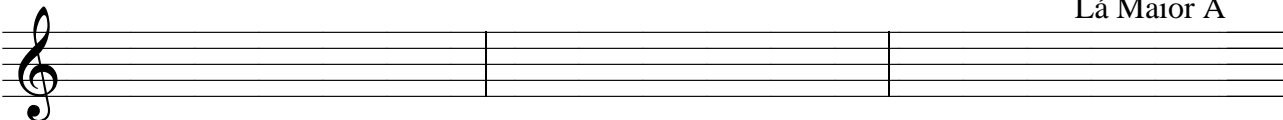
Mib menor Ebm



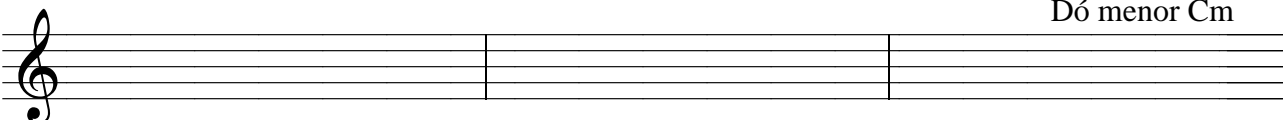
Láb menor Abm



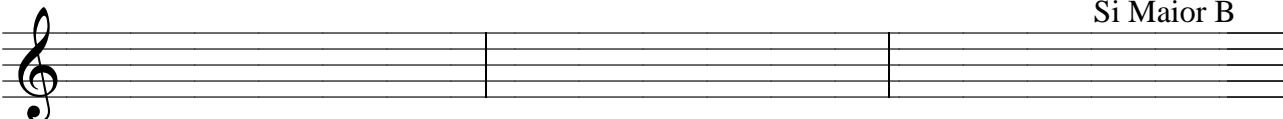
Lá Maior A



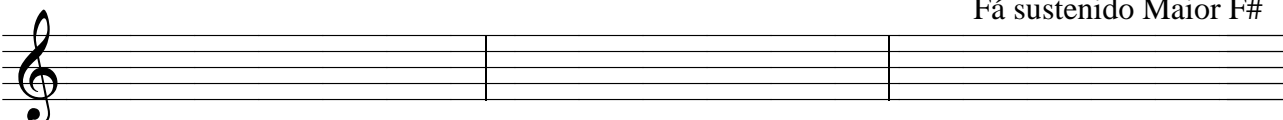
Dó menor Cm



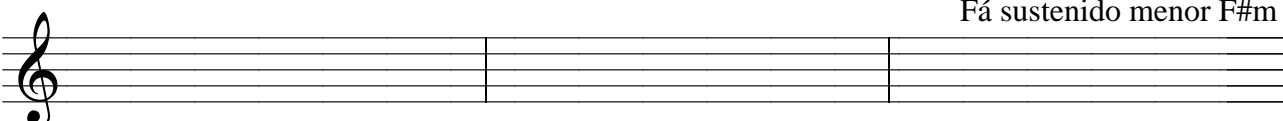
Si Maior B

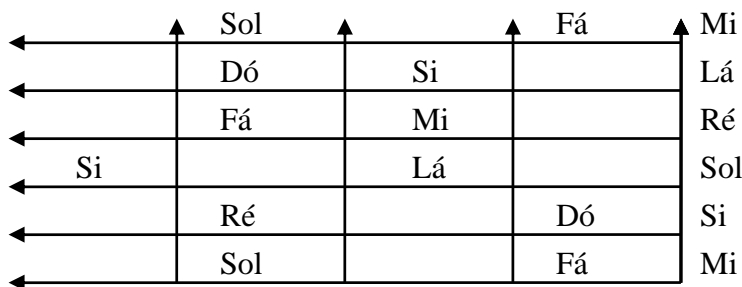


Fá sostenido Maior F#

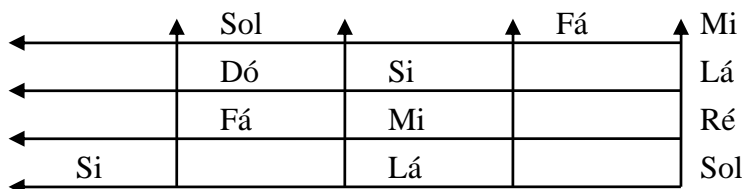


Fá sostenido menor F#m





GUITARRA
VIOLÃO



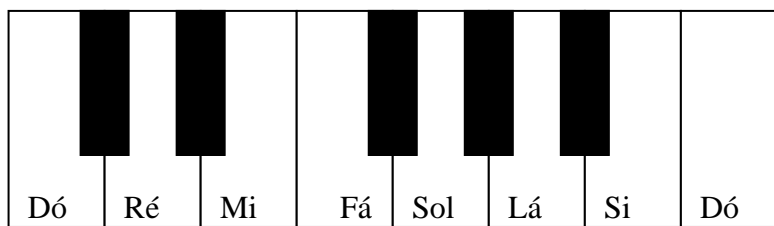
BAIXO



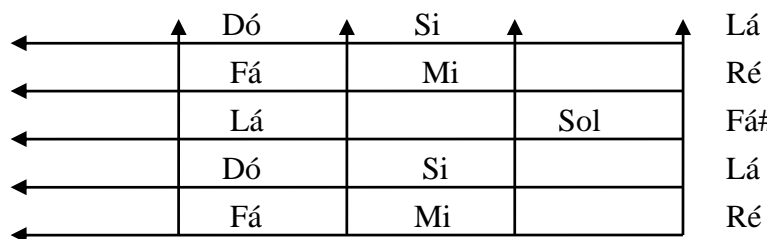
CAVAQUINHO



BANDOLIM



PIANO
TECLADO
ACORDEÃO



VIOLA CAIPIRA
Cebolão em D